

Elite Traveler

January/February 2010

Circulation: 127,786



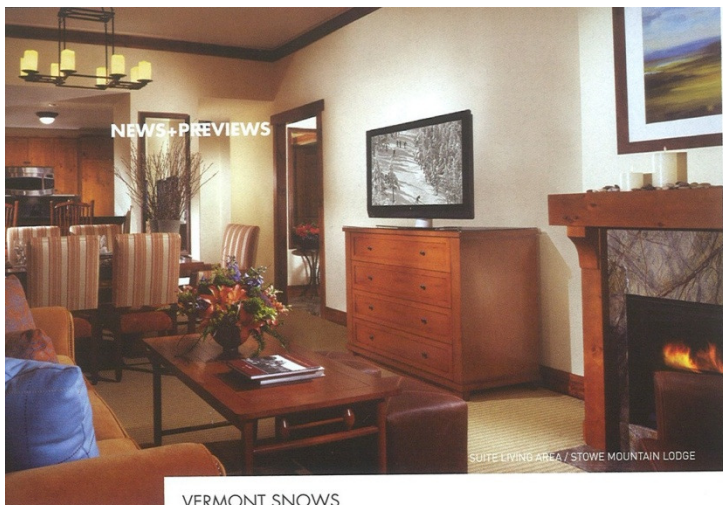
THE PRIVATE JET LIFESTYLE MAGAZINE

ELITE

TRAVELER

JAN/FEB
2010

TOP SUITES
OF THE
SOCAL
COAST



NEWS + PREVIEWS

SUITE LIVING AREA / STOWE MOUNTAIN LODGE

VERMONT SNOWS

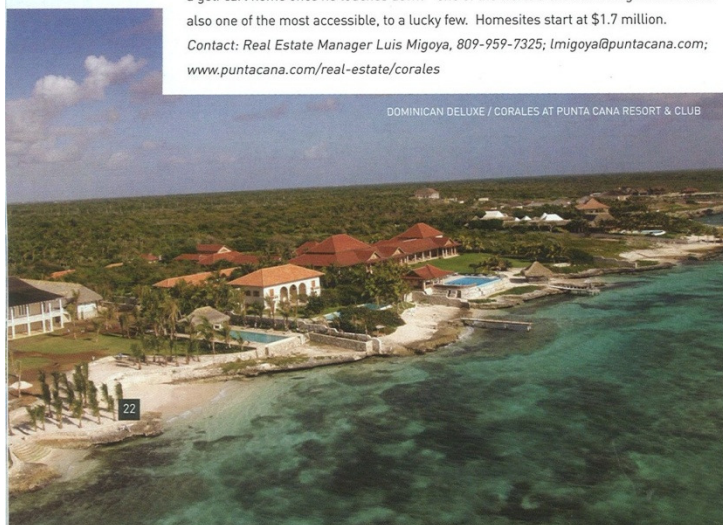
After a stunning inaugural season last winter as New England's newest luxury ski destination, expectations are running high for the sophomore season at the **Stowe Mountain Lodge** at the **Stowe Mountain Resort** in Vermont's Green Mountains. The 139-room lodge evokes a classic turn-of-the-century "great camp" vibe with lots of exposed wood and other rustic touches, but is also modern enough to have been honored for its green efforts, too. Select a 1,950-square-foot **Three-Bedroom Suite** (about \$1,200 a night) for your next ski trip and enjoy sweeping views of the mountains from your private outdoor terrace and a full-service gourmet kitchen with dining space for eight guests. You should also take advantage of the salon run by Boston celeb designer **Mario Russo** and the excellent **Wellness Center** after a hard day on the slopes.

Contact: Managing Director James Horsman, (802) 253-3560; jhorsman@destinationhotels.com; www.stowemountainlodge.com

COAST OF UTOPIA

The Dominican Republic continues its reign as the most buzzed-about destination in the Caribbean with **Punta Cana Resort & Club** its luxurious hub. Building a home in its toniest neighborhood, an enclave named **Corales** for the abundant coral reefs along the turquoise coastline, was once reserved for board members—including Oscar de la Renta and Julio Iglesias—or friends like Mikhail Baryshnikov. But starting in January, the first of only 126 new homesites will become available. Locations include acre-plus expanses shrouded by palm trees, overlooking the Caribbean or fronting a just-opened, Tom Fazio-designed golf course that's already being touted as one of the world's ten best. With a private VIP airport terminal that's under a minute from Corales' gates—Iglesias drives a golf cart home once he touches down—one of the world's exclusive neighborhoods is also one of the most accessible, to a lucky few. Homesites start at \$1.7 million.

Contact: Real Estate Manager Luis Migoya, 809-959-7325; lmigoya@puntacana.com; www.puntacana.com/real-estate/corales



DOMINICAN DELUXE / CORALES AT PUNTA CANA RESORT & CLUB

HOTELS TO COME

BY MARY GOSTELOW

The **Waldorf Astoria Shanghai** opens May 2010, in time for the 2010 World Expo. The 270-room hotel is a conversion of the historic 1910-vintage The Shanghai Club, at Two on The Bund, right on the west bank of the Huangpu River. HBA Design Studio is responsible for the hotel's interiors, and its general manager, Dirk De Cuyper, says that the **Presidential Suite** will have a fabulous river view, from Puxi across to Pudong. The 80-foot-long Long Bar is being revived, and restaurants will include a Chinoiserie Chinese restaurant, a fine dining restaurant and a tea salon.

www.waldorfastoria.com

Hotel Missoni Kuwait City, in the Gulf State's Symphony Centre, is scheduled to open between the first and second quarter of 2010. The 169-room hotel, by architects Dino Georgiou & Partners, is the centerpiece of Kuwait's \$120 million mixed-use **Symphony Centre**, with superb retailers and a **Six Senses** spa. Rosita Missoni and Italian designer Matteo Thun have done the interiors, and the **Penthouse Presidential Suite** will be 2,659 square feet with a 1,108-square-foot terrace. The general manager is Pascal Gadet.

www.missonihotels.com

Germany's most exciting new hotel promises to be **The Jumeirah Frankfurt Hotel**, opening in August 2010 in the city's financial center. The now-restored 18th-century Thurn und Taxis Palais, part of the PalaisQuartier project, will house some of the hotel's 219 guest rooms and suites, with a new 25-floor adjacent tower designed by KSP Engel and Zimmermann. Peter Schilling and Associates Hotel Interior Design's décor includes several stunning suites, and Takashi Sugimoto and Super Potato have designed the fine dining restaurants. The general manager is Dagmar Woodward.

www.jumeirah.com

Lifestyle is also a key element of the 102-room **Buddha-Bar Hotel Klotild Palace**, the conversion of a building on the Pest side of the Danube River, just across from the Elizabeth Bridge, opening late 2010 in Budapest, Hungary. The general manager is Jo Gowie, and the inspiration is the Buddha-Bar in Paris. The Paris-based design firm REV is producing interiors with a colonial Asian feel. The premium suites will include two 1,076-square-foot **Buddha Duplex Suites** and an 861-square-foot duplex **Zen Spa Suite**. Expect a Buddha Bar restaurant and a Siddhartha Café.

www.buddhabarhotelbudapest.com